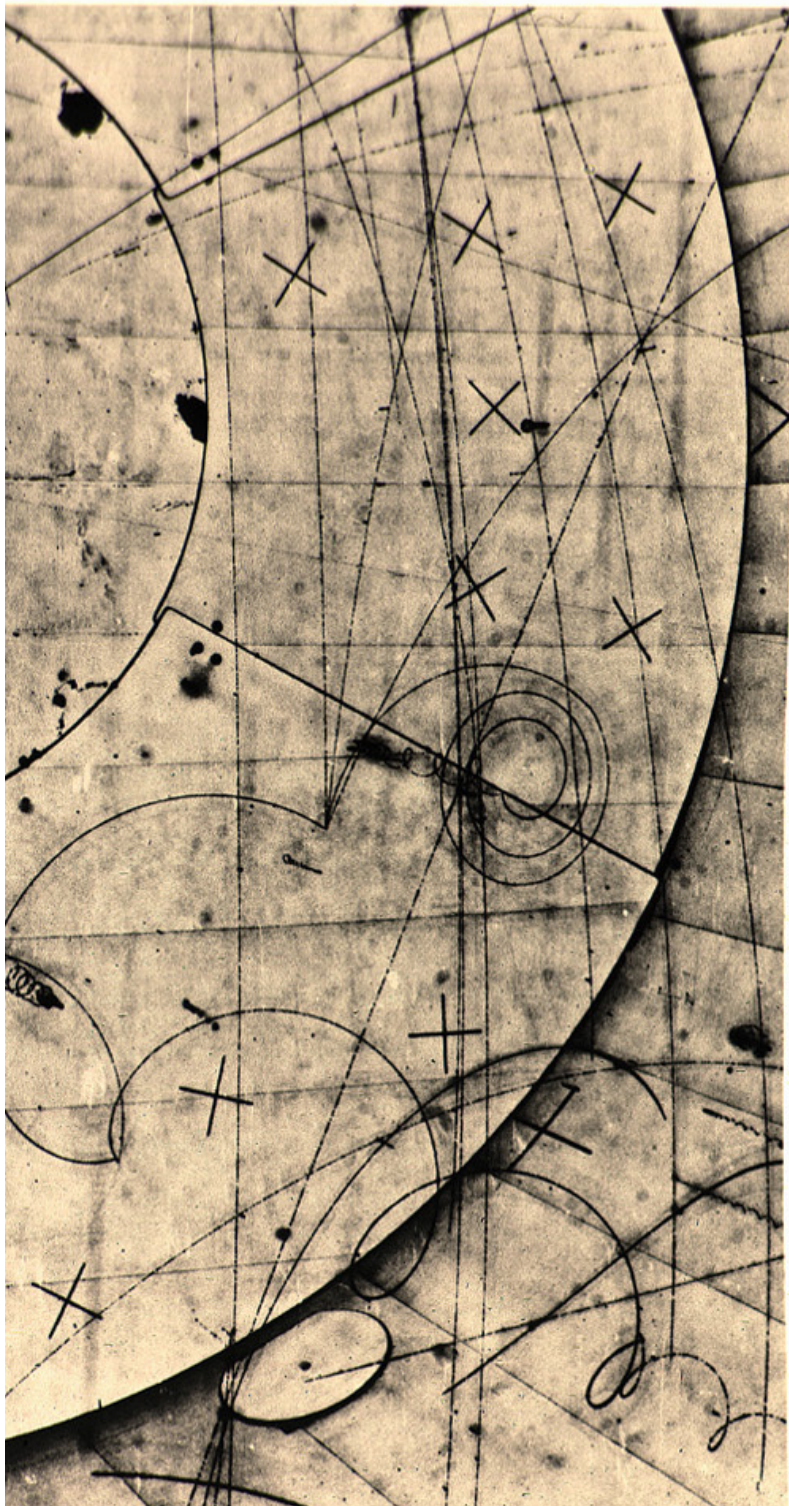


Accessing patients' perspectives of acute lymphoblastic leukaemia (ALL) through the arts

Dr Alex Mermikides
Dr Milton Mermikides





AACHEN-BONN-CERN-MUNICH-OXFORD COLLABORATION

WA 21

EVENT 294/0995

$\nu p \rightarrow D^* p \mu^-$

$D^0 \pi^+$

$\mu^+ \nu$
 $e^+ \nu$

$K^- \pi^+$

$+ p \rightarrow \Sigma^- \pi^+$

$n \pi^-$

$+ p \rightarrow np$

μ^-
42.5

π^+
3.6

p
1.71

$\pi^+ 0.23$

KINK

$\mu^+ 0.14$

$K^- 0.32$

e^+

π^-

π^+

Σ^-

n

p

NEUTRINO
BEAM

68681

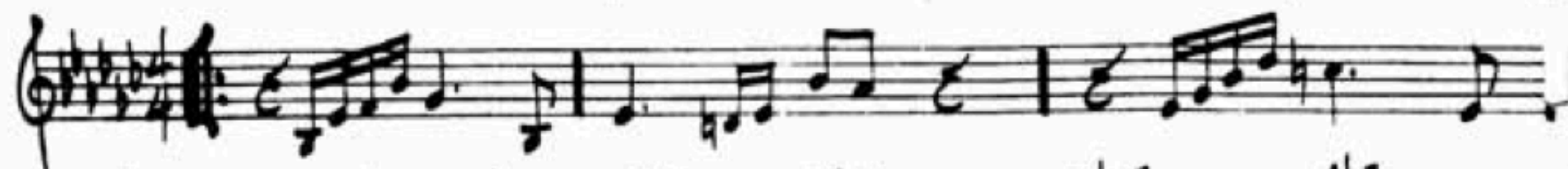
MOMENTUM IN GeV/c

$$\frac{dp}{dt} = \frac{(1+j) \left(\frac{dx}{dt} \right) - x \left(\frac{dj}{dt} \right)}{(1+j)^2} = \frac{(1+j) \left(\frac{dx}{dt} \right) - x \left(\frac{dj}{dt} \right)}{(1+j)^2}$$

As $p = \frac{x}{1+j}$, solving it for x we get $x = p(1+j)$ and putting it in place of x .

$$\begin{aligned} \frac{dp}{dt} &= \frac{(1+j) \left(\frac{dx}{dt} \right) - p(1+j) \left(\frac{dj}{dt} \right)}{(1+j)^2} = \frac{1+j \left(\frac{dx}{dt} \right)}{(1+j)^2} - \frac{p(1+j) \left(\frac{dj}{dt} \right)}{(1+j)^2} \\ &= \frac{1}{(1+j)} \left(\frac{dx}{dt} \right) - \frac{1}{(1+j)} (p) \left(\frac{dj}{dt} \right) = \frac{1}{1+j} \left[\frac{dx}{dt} - p \left(\frac{dj}{dt} \right) \right] \end{aligned}$$

Eb- C-7 b5 F-7 b5 Bb7 alt. Eb-7 Ab7

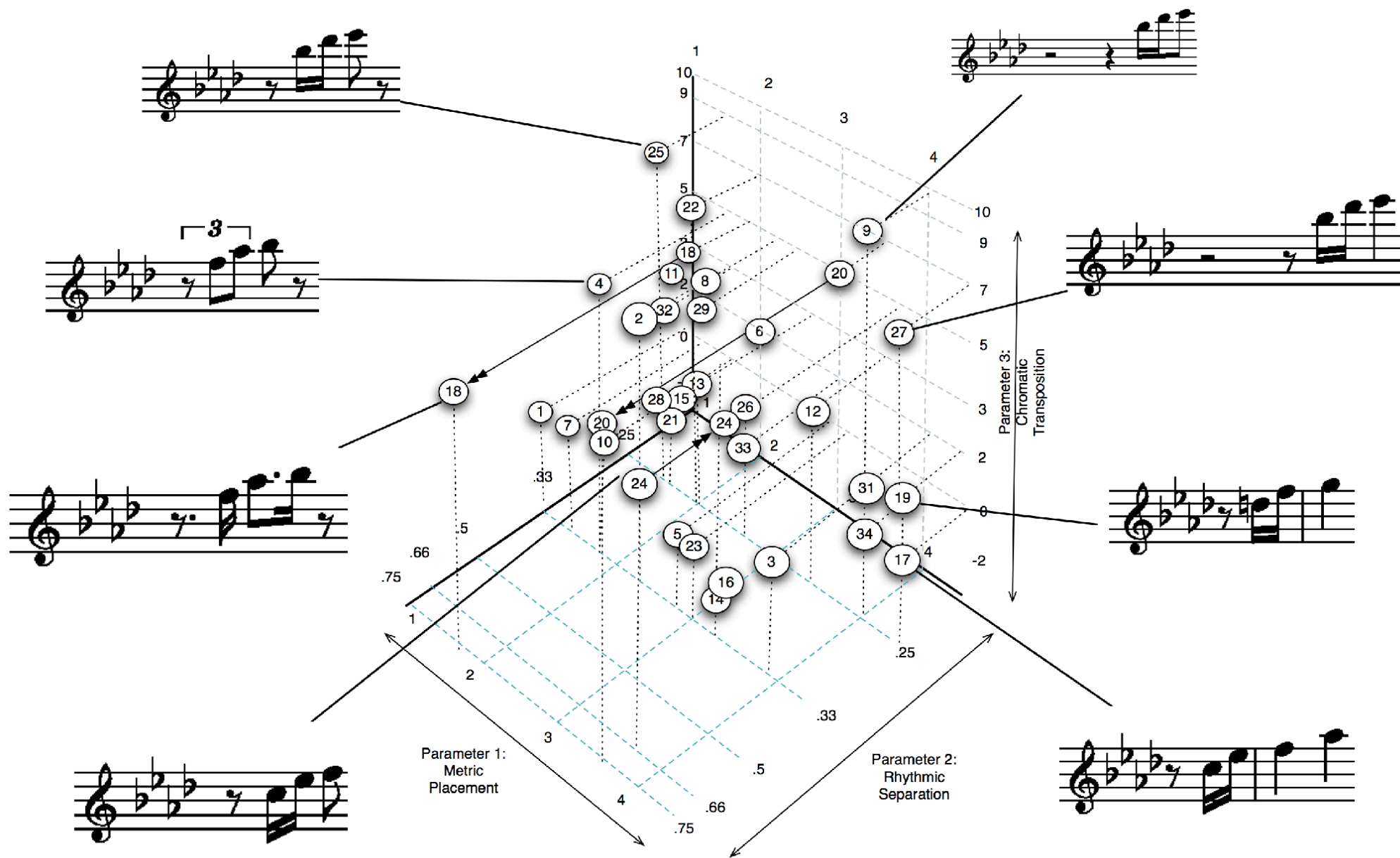


B-7 E7 Bb-7 Eb7 Ab-7 Db7 Eb-7 Ab7



C-7 b5 F7 b9 Bb7

C-7 b5 F7 b9 Bb7



Say these words:

Yellow

Telephone

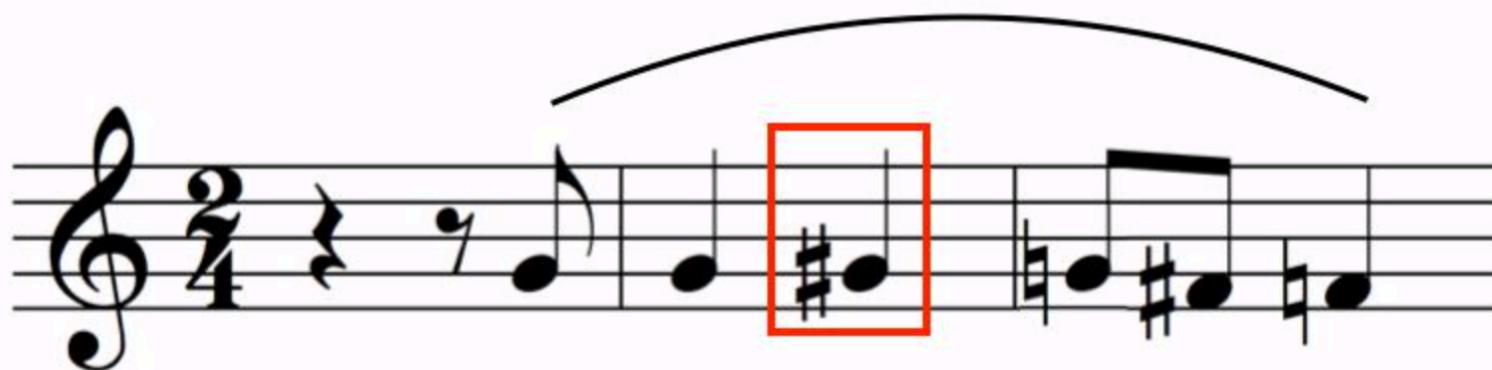
The yellow telephone

A

Ye llow

B

Te le phone

C

The ye llow te le phone

Telephone my house!

Is that my telephone?

Whose telephone is that?

A Imperative



Te le phone my house!

B Yes-no question



Is that my te le phone?

C WH-question



Whose te le phone is that?



B

A

C

H



The unfinished *Contrapunctus XIV* C.P.E. Bach's note reads "At the point where the composer introduces the name *BACH* in the countersubject to this fugue, the composer died."

The coronal suture of the skull [has] a certain similarity to the closely wound line [...] of a phonograph [...] Suppose, one played a trick on this needle and caused it to retrace a path not made by the graphic translation of a sound, but self-sufficing and existing in nature [...] what would happen? ...

Ur-Geräusch (Rilke 1919)

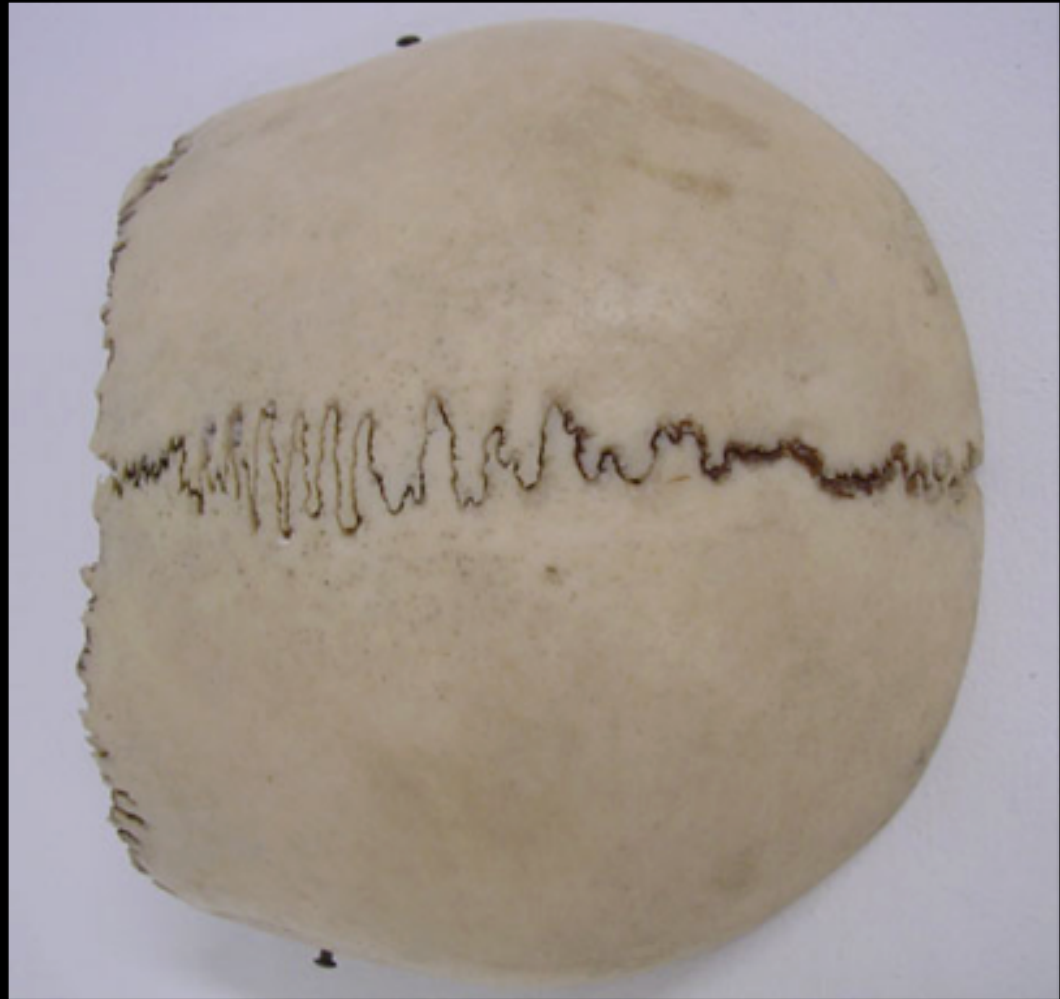
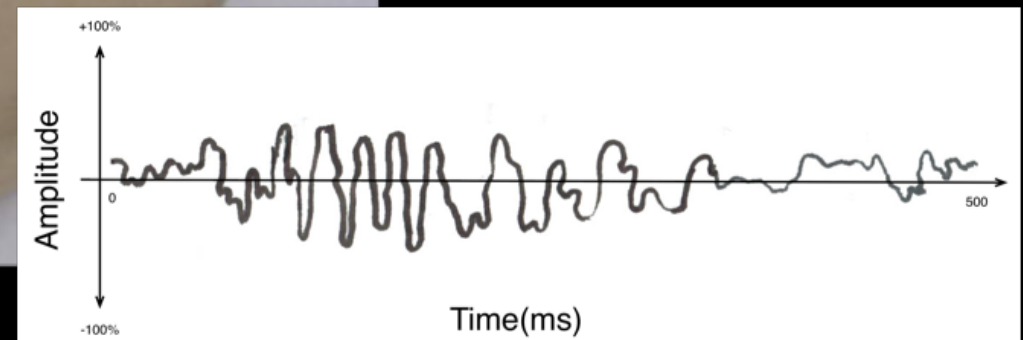
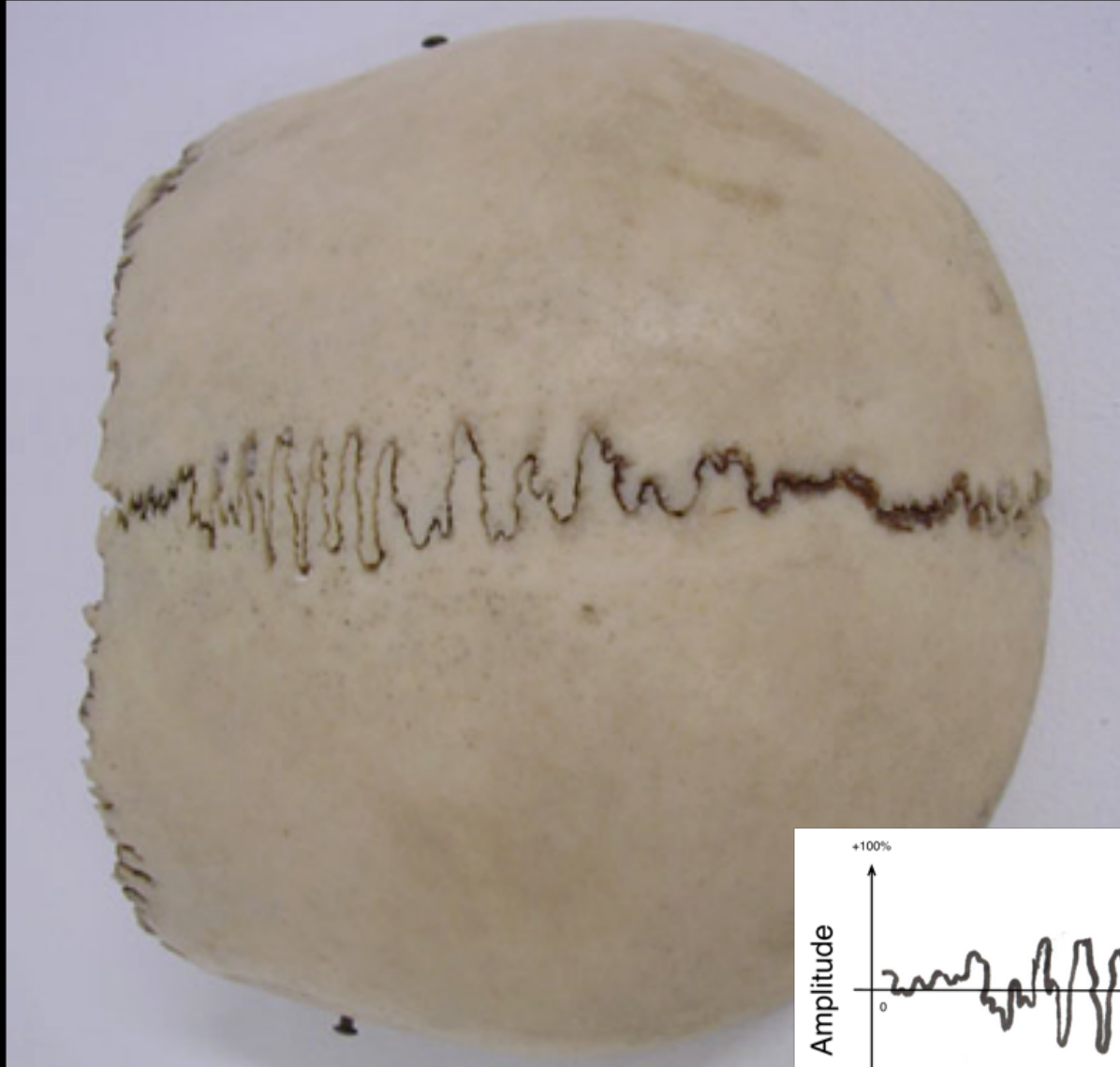
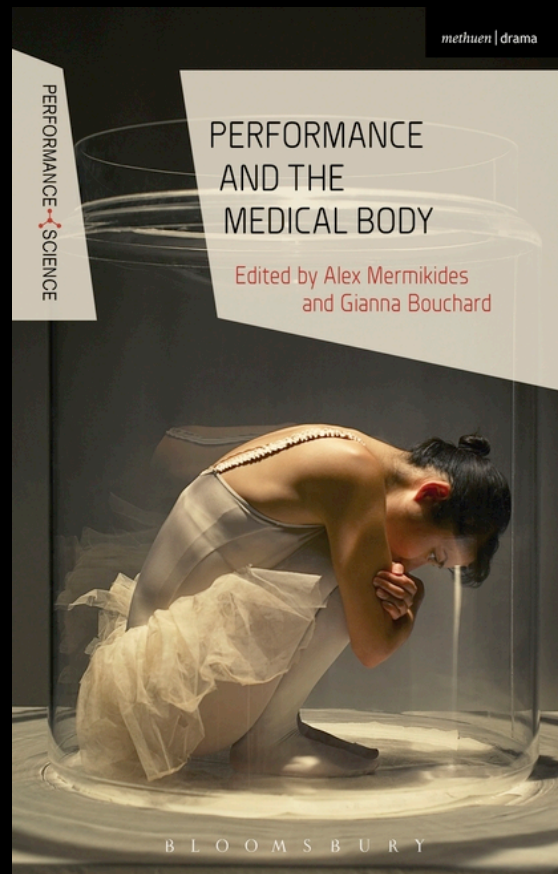
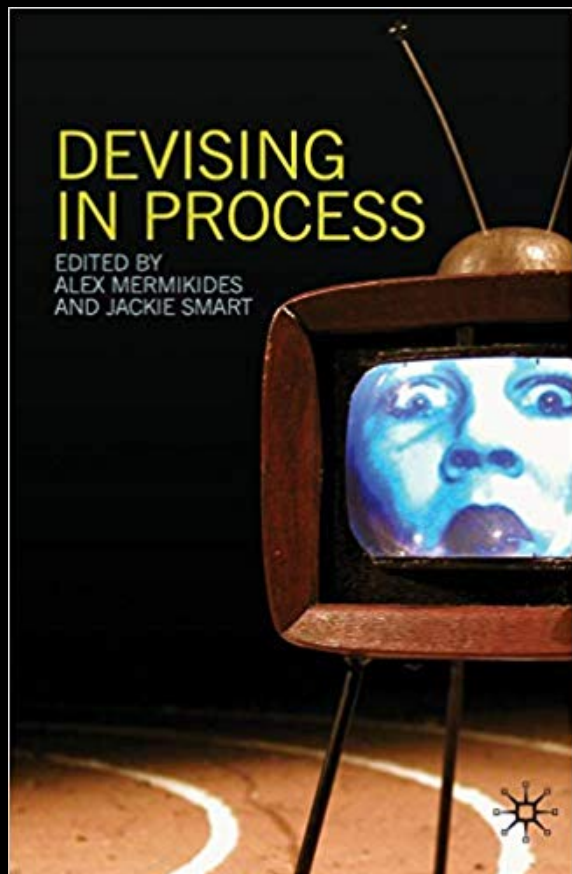


Image ©2004 Palmer

Primal Sound (2004)









DATE	WBC	RBC	HB	HCT	MCV	MCH	MCHC	RDW	Platelets	Neutrophil	Lymphocyte	Monocyte	Eosinophil	Basophil
22/11/04	340.0	5.74	10.0	0.343	59.7	17.4	29.1	16.0	31					
23/11/04	332.0	5.23	10.5	0.317	59.3	19.9	33.1	16.0	28					
24/11/04		4.74	8.3	0.280	59.2	17.5	29.5	16.5	35	14.4	311.0	19.5	0.4	0.2
24/11/04	345.0	4.66	8.5	0.200	59.3	18.3	30.8	16.8	73					
24/11/04	370.0	4.90	7.3	0.300	61.1	18.1	29.3	16.2	72					
25/11/04	242.0	4.42	8.2	0.266	60.1	18.6	31.0	16.0	72	12.4	212.0	17.5	0.3	0.2
25/11/04	81.4	4.63	9.1	0.276	59.5	19.7	33.1	15.8	50	8.6	68.6	4.0	0.2	0.0
26/11/04	17.9	4.18	8.5	0.252	60.2	20.3	33.0	15.0	32	4.4	12.7	0.7	0.0	0.0
26/11/04	16.3	4.18	8.3	0.249	59.5	19.9	33.5	15.4	32	4.4	11.3	0.5	0.0	0.0
27/11/04	6.6	3.72	7.7	0.225	60.5	20.7	34.3	15.3	18	2.5	3.9	0.2	0.0	0.0
28/11/04	5.6	3.79	7.7	0.226	59.6	20.3	34.0	15.1	17	1.8	3.7	0.1	0.0	0.0
28/11/04	5.7	3.84	7.8	0.228	59.4	20.4	34.3	15.1	16	1.7	3.8	0.1	0.0	0.0
29/11/04	4.0	3.23	6.6	0.197	61.1	20.6	33.7	15.4	13	1.1	2.9	0.1	0.0	0.0
30/11/04	5.3	4.14	8.3	0.263	63.5	22.5	35.4	20.2	36	1.9	3.3	0.1	0.0	0.0
01/12/04	5.4	3.90	8.7	0.350	64.2	23.3	34.7	20.1	30	1.6	3.6	0.1	0.0	0.0
02/12/04	5.2	4.40	9.0	0.200	63.6	22.4	35.2	20.7	43	2.1	2.8	0.3	0.0	0.0
02/12/04	5.5	4.21	9.3	0.270	64.1	22.2	34.6	20.7	37	2.9	2.3	0.3	0.0	0.0
03/12/04	2.5	3.73	8.3	0.239	64.2	22.3	34.8	20.8	51	2.0	0.5	0.0	0.0	0.0
04/12/04	3.2	3.25	7.1	0.211	65.0	21.9	33.6	20.8	66	1.5	1.6	0.1	0.0	0.0
05/12/04	2.8	3.59	8.7	0.246	68.5	24.1	35.2	22.6	113	1.4	1.4	0.0	0.0	0.0
06/12/04	4.0	3.94	9.4	0.271	70.5	24.6	34.8	22.8	220	2.7	2.1	0.0	0.0	0.0
07/12/04	3.0	3.44	8.3	0.247	71.7	24.0	33.5	23.0	240	1.1	1.9	0.0	0.0	0.0
08/12/04	2.1	3.31	8.2	0.235	71.1	24.9	35.0	23.0	281	0.6	1.4	0.1	0.0	0.0
09/12/04	2.0	3.48	8.8	0.249	71.4	25.1	35.2	23.3	278	0.8	0.9	0.2	0.0	0.0
10/12/04	3.2	4.38	10.7	0.324	74.1	24.6	33.2	23.1	289	2.1	0.9	0.2	0.0	0.0
11/12/04	2.9	4.09	10.0	0.305	74.7	24.5	32.8	23.1	292	1.7	0.9	0.1	0.0	0.0
12/12/04	1.6	4.16	10.2	0.315	75.6	24.4	32.9	23.0	280	0.6	1.0	0.0	0.0	0.0
13/12/04	2.1	4.46	10.8	0.333	74.6	24.2	32.5	23.0	315	0.3	1.7	0.0	0.0	0.0
15/12/04	11.7	4.29	10.6	0.317	73.9	24.7	33.4	23.2	316	11.3	0.4	0.0	0.0	0.0
16/12/04	17.7	4.17	10.2	0.318	76.1	24.4	32.1	23.3	288	15.7	1.8	0.2	0.0	0.0
17/12/04	5.0	4.24	10.5	0.318	75.1	24.9	33.1	23.0	296	3.2	1.5	0.2	0.0	0.0
18/12/04	4.3	4.40	10.9	0.329	74.9	24.8	33.1	22.9	323	1.0	2.2	0.3	0.0	0.0
19/12/04	2.1	3.86	9.8	0.288	74.7	25.5	34.2	22.7	221	0.6	1.4	0.1	0.0	0.0
20/12/04	2.0	3.65	9.0	0.275	75.3	24.7	32.7	22.7	210	0.7	1.3	0.0	0.0	0.0
21/12/04	2.9	3.91	9.6	0.294	75.3	24.7	32.8	22.9	241	0.9	1.9	0.0	0.0	0.0
22/12/04	3.4	3.94	9.8	0.294	74.6	24.8	33.3	22.9	281	1.4	1.9	0.1	0.0	0.0
23/12/04	2.9	3.55	9.1	0.266	75.1	25.5	34.0	22.9	225					
24/12/04	3.7	4.20	10.3	0.308	73.4	24.5	33.4	23.4	249	1.5	2.0	0.2	0.0	0.0
25/12/04	3.2	4.02	9.9	0.302	75.2	24.8	32.9	23.5	332	2.0	1.1	0.1	0.0	0.0
26/12/04	2.5	3.78	9.5	0.286	75.6	25.3	33.3	22.6	170	1.9	0.6	0.0	0.0	0.0
27/12/04	1.8	3.83	9.6	0.292	76.1	25.0	32.9	22.3	145	1.4	0.4	0.0	0.0	0.0
28/12/04	0.8	3.47	8.7	0.263	75.9	25.0	33.0	21.9	119	0.5	0.3	0.0	0.0	0.0
29/12/04	0.7	3.17	8.1	0.255	80.5	26.3	33.1	19.0	45	0.3	0.4	0.0	0.0	0.0
31/12/04	0.3	3.39	9.0	0.264	78.0	26.5	33.9	18.9	31	0.0	0.3	0.0	0.0	0.0
01/01/05	0.3	3.45	9.0	0.279	81.1	26.2	32.3	19.2	32	0.0	0.3	0.0	0.0	0.0
01/01/05	0.3	3.62	9.5	0.284	78.6	26.3	33.5	19.0	25	0.0	0.3	0.0	0.0	0.0

BLOOD LINES (2004)

Hemoglobin

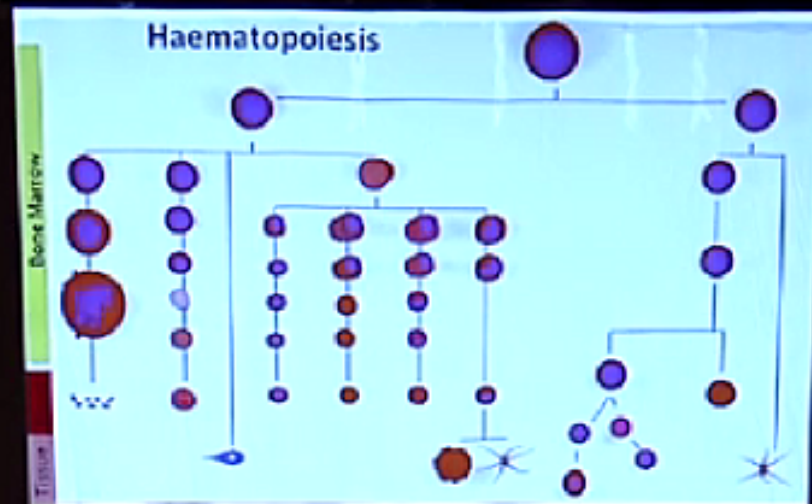
Platelets

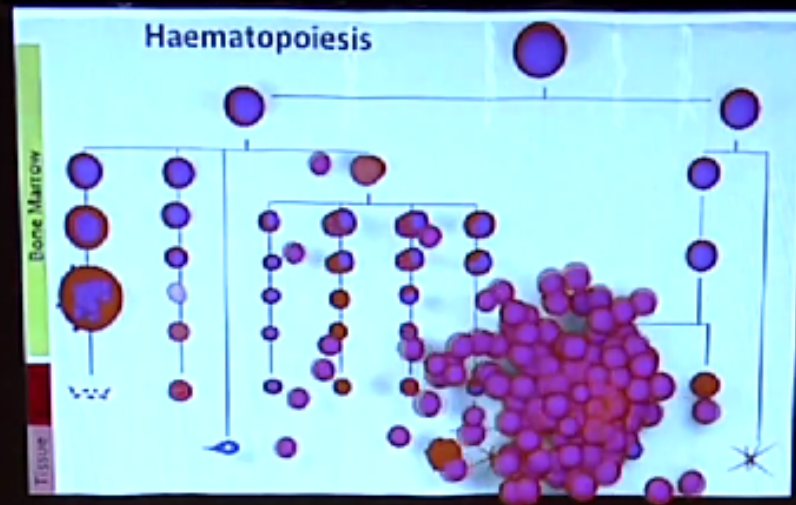
Red Blood Cells



1_A 2 8_B 44 2_{Cw} 7 17_{DR} 11 52_{DRB}









Dr Rebecca Law







Careful

thank you

Alex.Mermikides@gsmd.ac.uk

M.Mermikides@surrey.ac.uk



bibliography

Dunn, E. (2014), 'Safe in the Bubble, out into the Unknown: Returning Home Following Allogeneic Stem Cell Transplantation', Ph.D. thesis, University of Surrey. Available online: <http://epubs.surrey.ac.uk/808305> (accessed 4 April 2019).

Fox, R. C. and J. P. Swazey (1974), *The Courage to Fail: A Social View of Organ Transplants and Dialysis*, Chicago: University of Chicago Press.

Garcia, M., J. Chapman, P. Shaw, D. Gottlieb, A. Ralph, J. Craig and A. Tong (2013), 'Motivations, Experiences, and Perspectives of Bone Marrow and Peripheral Blood Stem Cell Donors: Thematic Synthesis of Qualitative Studies', *Biology of Blood and Marrow Transplantation*, 19: 1046-1058.